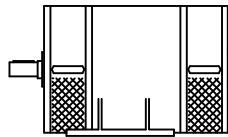


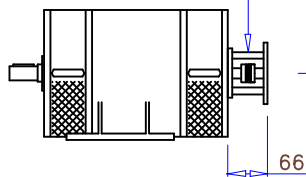


Data sheet -----

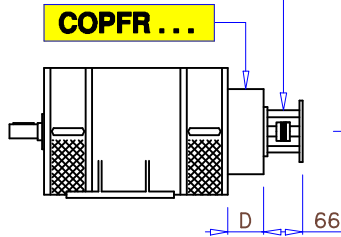


- DC20R
- DC60R
- AT101
- FR...

Campana con giunto
Support with joint



Campana con giunto
Support with joint



COPFR...

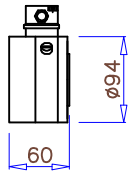
- DC20RF
- DC60RF
- DC10RF
- AT202

DC20R

DC60R

D.C. tachogenerator 2 poles

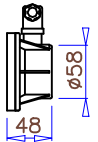
- DC20R : D.C. voltage at 1000min⁻¹ : 20V
- DC60R : D.C. voltage at 1000min⁻¹ : 60V
- Weight:1.4Kg - Terminal box



AT101

A.C. tachogenerator

- D.C. voltage at 1000min⁻¹: 24V
- Weight:0.35Kg - Connector

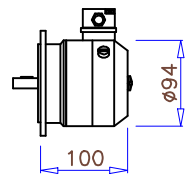


DC20RF

DC60RF

D.C. tachogenerator 2 poles

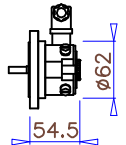
- DC20RF : D.C. voltage at 1000min⁻¹: 20V
- DC60RF : D.C. voltage at 1000min⁻¹: 60V
- Weight:1.9Kg - Terminal box



DC10RF

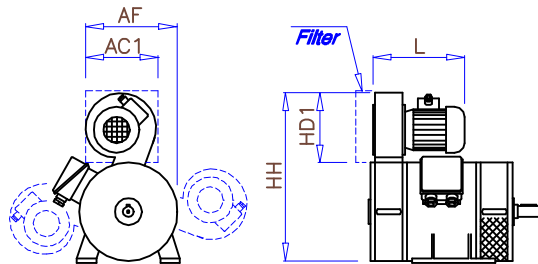
D.C. tachogenerator 4 poles

- D.C. voltage at 1000min⁻¹: 10V
- Weight:0.55Kg - Connector



VT...

Ventilatore
Blower



Type	VT80	VT100	VT112	VT132	VT160
AC1	155	155	155	175	240
AF	145	160	175	195	337
HD1	150	150	150	170	250
HH	310	345	372	432	570
L	230	230	230	255	298
Filter	160x160x40			245x245x130	

VT THREE-PHASE BLOWER

VT80 - VT100 - VT112	VT132	VT160
Motor type 56-2A Δ/λ	Motore	Motor type 71-2A Δ/λ
220-240V / 380-420V		220-240V / 380-420V
KW0.09 / HP0.12		KW0.37 / HP0.5
min ⁻¹ 2820 - A0.53/0.31		min ⁻¹ 2820 - A1.76/1.02
IP55 - Hz50 - CL. F		IP55 - Hz50 - CL. F

Note : single-phase motor on request

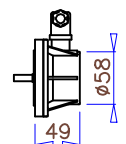
BLOWER AIR FLOW

VT80 - VT100 - VT112	VT132	VT160
200m ² /h	300m ² /h	500m ² /h

AT202

A.C. tachogenerator

- D.C. voltage at 1000min⁻¹: 24V
- Weight:0.5Kg - Connector



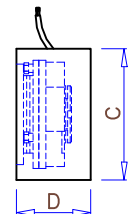
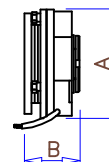
FR...

Outside brake

Brake covering

COPFR...

- With lack of current
- D.C. voltage : 24V or 190V
- Free wires or terminal box



LACK OF CURRENT BRAKES

FR...	Nm	Motor	A x B	COPFR...	C x D
FR4...	4	80R-80S	ø86x46	COPFR80100	ø130x54
FR8...	8	100R-100S-100T	ø104x55		ø160x68
FRE16...	16	112R-112S-112T	ø132x66	COPFR112132	ø192x73
FR32...	32	112L-132R-132S	ø152x73		ø220x78
FRE60...	60	132T-132L	ø168x85	COPFR160	ø225x90
FRE80...	80	160R	ø194x95		
FRE150...	150	160S	ø221x110		