

# Motore V88 IP54

## Motor V88 IP54

1,1-4,4kW

Motori C.C. a norme CEI ed IEC - magnete permanente - 4 poli  
D.C. motors CEI and IEC standards - permanent magnet - 4 poles

Alimentazione da batteria - tensione nominale 12/24/36/48/72/110V  
Battery supply - rated voltage 12/24/36/48/72/110V

Fattore di forma 1 - servizio continuo S1 - autoventilato  
Form factor 1 - continuous duty S1 - selfventilated

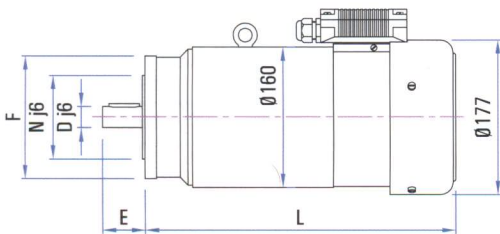
Protezione IP54 - isolamento classe F / H  
Protection IP54 - insulation F / H class

Scatola morsetti - a richiesta esecuzione non ventilata  
Terminal box - no ventilated execution on request

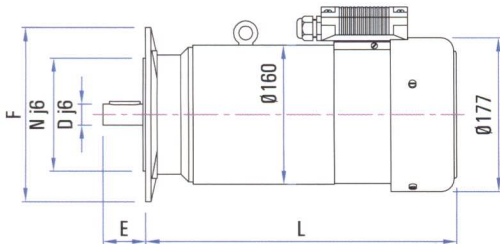
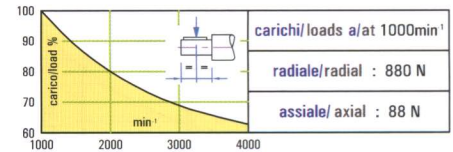
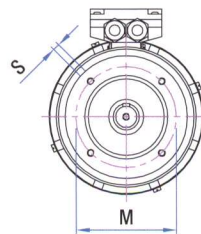


Tipo Type	Potenza Power	Tensione/Corrente Voltage/Current	Velocità Speed	Coppia Torque	Potenza Power	Tensione/Corrente Voltage/Current	Velocità Speed	Coppia Torque	Potenza Power	Tensione/Corrente Voltage/Current	Velocità Speed	Coppia Torque
V88.38	1,1 kW	12 V - 110 A	1500 rpm	7 Nm	1,1 kW	12 V - 110 A	2200 rpm	4,8 Nm	- -	- -	- -	- -
	1,2 kW	24 V - 60 A		7,6 Nm	1,5 kW	24 V - 75 A		6,5 Nm	2,2 kW	24 V - 110 A	3000 rpm	7 Nm
		36 V - 40 A		7,6 Nm	1,5 kW	36 V - 50 A		6,5 Nm	2,2 kW	36 V - 74 A	3200 rpm	6,6 Nm
		48 V - 30 A		7,6 Nm	1,5 kW	48 V - 37 A		6,5 Nm	2,2 kW	48 V - 55 A	3000 rpm	7 Nm
V88.57	1,1 kW	12 V - 110 A	1500 rpm	7 Nm	- -	- -	- -	- -	- -	- -	- -	- -
	1,7 kW	24 V - 85 A		10,8 Nm	2,2 kW	24 V - 110 A	10,7 Nm	2,2 kW	24 V - 110 A	1950 rpm	10,7 Nm	7 Nm
		36 V - 57 A		10,8 Nm	2,2 kW	36 V - 74 A	10 Nm	3,3 kW	36 V - 110 A	3000 rpm	10,5 Nm	
		48 V - 42 A		10,8 Nm	2,2 kW	48 V - 55 A	10,7 Nm	3,3 kW	48 V - 83 A	3000 rpm	10,5 Nm	
V88.81	1,1 kW	12 V - 110 A	1100 rpm	9,6 Nm	- -	- -	- -	- -	- -	- -	- -	- -
	2,2 kW	24 V - 110 A	1500 rpm	14 Nm	2,2 kW	24 V - 110 A	2200 rpm	9,6 Nm	- -	- -	- -	- -
		36 V - 74 A		14 Nm	3 kW	36 V - 100 A		13 Nm	3,3 kW	36 V - 110 A	3400 rpm	9,3 Nm
		48 V - 55 A		14 Nm	3 kW	48 V - 75 A		13 Nm	4,4 kW	48 V - 110 A	3000 rpm	14 Nm

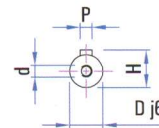
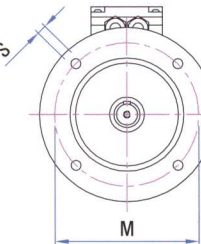
Tolleranza / Tolerance ±10%      Max. 1,1 kW a / at 12 V      Max. 2,2 kW a / at 24 V      Max. 3,3 kW a / at 36 V      Max. 4,4 kW a / at 48 V



B 14



B 5



### Alberi / Shafts

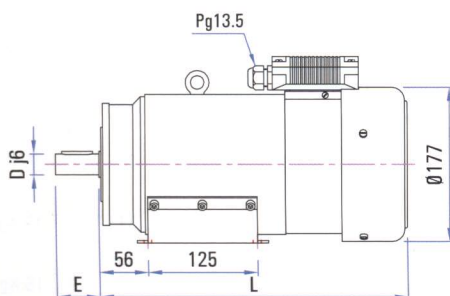
D	E	P	H	d
Ø19	40	6x6x30	21.5	M6
Ø24	50	8x7x35	27	M8

### Flange B5 / Flanges B5

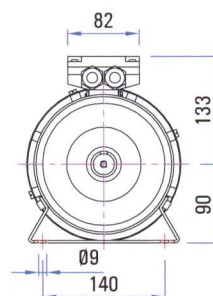
F	N	M	T	S
Ø200	Ø130	Ø165	3	Ø11

### Flange B14 / Flanges B14

F	N	M	T	S
Ø140	Ø95	Ø115	3	M8



B 3



Tipo / Type	L	Peso / Weight
V88.38	354	22 Kg.
V88.57	409	29.6 Kg.
V88.81	464	37.2 Kg.