



Motor AV72B - AV72C - AV72D - AV72E

Motor AV72B - AV72C - AV72D - AV72E

250-1800W

Data sheet -----

Motors according to CEI and IEC standards – permanent magnets/2 poles – skew slots rotor

Max. start current 150% of nominal value for 60 sec. – N class dynamic balancing

Aluminium alloy front and back shields with steel bush for ball-bearings

Top side terminal box from drive-end view with heart terminal inside



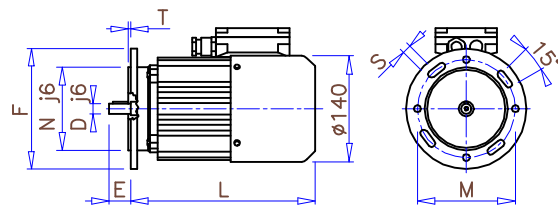
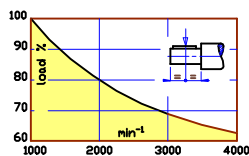
COOLING FORM	PROTECTION	INSULATION	AMB. TEMP.
Closed self-ventilated IC411	IP 54	F/H Class $\Delta t 105^{\circ}\text{C}$	Max. +40°C

FORM FACTOR 1.4 / SCR (thyristors)				RATED VOLTAGE 170V			DUTY S1			
TYPE	1500 min ⁻¹		2000 min ⁻¹		3000 min ⁻¹		TORQUE			
AV72B	250W	1.7A	56mH	335W	2.4A	31mH	500W	3.5A	14mH	1.6Nm
AV72C	360W	2.6A	35mH	480W	3.3A	20mH	720W	5A	9mH	2.3Nm
AV72D	490W	3.4A	26mH	655W	4.5A	15mH	980W	6.8A	6.5mH	3.1Nm
AV72E	675W	4.7A	18mH	900W	6.3A	10mH	1350W	9.4A	4.5mH	4.3Nm

FORM FACTOR 1.05 / SCR with inductance or transistor PWM				RATED VOLTAGE 170V			DUTY S1			
TYPE	1500 min ⁻¹		2000 min ⁻¹		3000 min ⁻¹		TORQUE			
AV72B	315W	2.2A	56mH	420W	2.9A	31mH	630W	4.4A	14mH	2Nm
AV72C	450W	3.1A	35mH	600W	4.2A	20mH	900W	6.3A	9mH	2.9Nm
AV72D	630W	4.4A	26mH	840W	5.8A	15mH	1260W	8.7A	6.5mH	4Nm
AV72E	900W	6.3A	18mH	1200W	8.3A	10mH	1800W	12.5A	4.5mH	5.7Nm

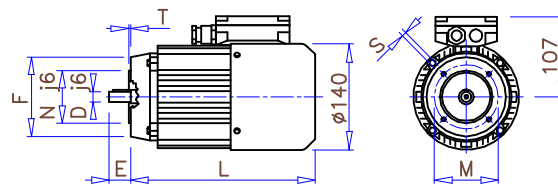
Tolerance ±10%

type AV72
Radial load at 1000min ⁻¹ : 410N
Axial load: 1/10 Radial load



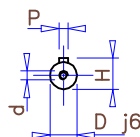
B5

Type	L	Weight
AV72.B	245	8.5Kg
AV72.C	278	11.1Kg
AV72.D	308	12.7Kg
AV72.E	368	17Kg

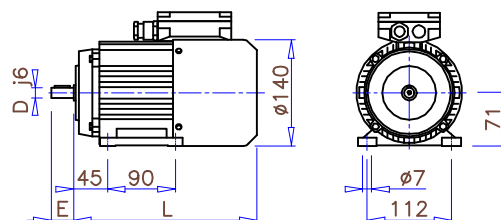


B14

Shafts				
D	E	P	H	d
14	30	5x5x20	16	M5x12
19	40	6x6x30	21.5	M6x18



Flange B14					Flange B5				
F	N	M	T	S	F	N	M	T	S
105	70	85	2.5	M6	160	110	130	3	9.5
120	80	100	2.5	M6	200	130	165	3	11



B3