



Motor AV60A - AV60B - AV60C

Motor AV60A - AV60B - AV60C

75-540W

Data sheet -----


Motors according to CEI and IEC standards – permanent magnets/2 poles – skew slots rotor

Max. start current 150% of nominal value for 60 sec. – N class dynamic balancing

Aluminium alloy front shields with heart terminal

Right side terminal box from drive-end view



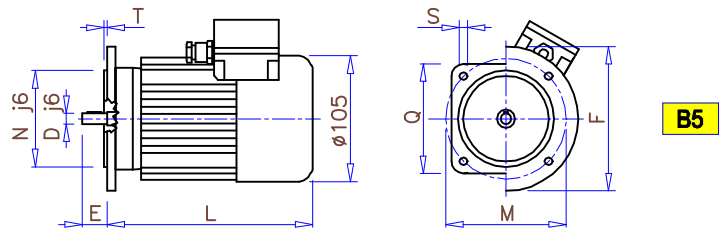
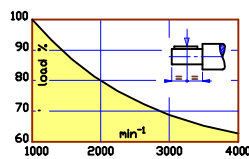
COOLING FORM	PROTECTION	INSULATION	AMB. TEMP.
Closed self-ventilated IC411 	IP 54	F/H Class $\Delta t105^{\circ}\text{C}$	Max. +40°C

FORM FACTOR 1.4 / SCR (thyristors)				RATED VOLTAGE 170V			DUTY S1			
TYPE	1500 min ⁻¹			2000 min ⁻¹			3000 min ⁻¹			TORQUE
AV60A	75W	0.55A	184mH	100W	0.73A	98mH	150W	1.1A	46mH	0.5Nm
AV60B	150W	1.1A	84mH	200W	1.47A	47mH	300W	2.2A	21mH	1Nm
AV60C	225W	1.65A	60mH	300W	2.2A	34mH	450W	3.3A	15mH	1.4Nm

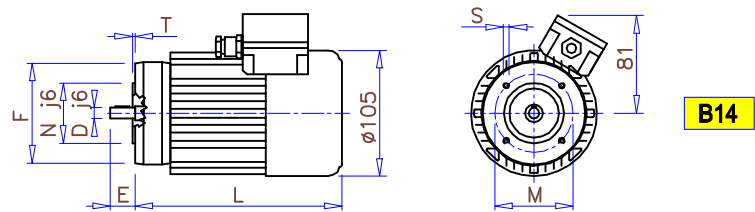
FORM FACTOR 1.05 / SCR with inductance or transistor PWM				RATED VOLTAGE 170V			DUTY S1			
TYPE	1500 min ⁻¹			2000 min ⁻¹			3000 min ⁻¹			TORQUE
AV60A	90W	0.65A	184mH	135W	0.87A	98mH	180W	1.3A	46mH	0.6Nm
AV60B	180W	1.3A	84mH	240W	1.7A	47mH	360W	2.6A	21mH	1.2Nm
AV60C	270W	2A	60mH	360W	2.6A	34mH	540W	3.9A	15mH	1.7Nm

Tolerance $\pm 10\%$

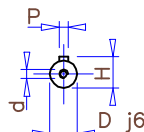
type AV60
Radial load at 1000min ⁻¹ : 300N
Axial load : 1/10 Radial load



Type	L	Weight
AV60.A	172	3Kg
AV60.B	219	4.6Kg
AV60.C	264	6.1Kg



Shafts				
D	E	P	H	d
9	20	3x3x12	10.2	M3x8
11	23	4x4x15	12.5	M4x10
14	30	5x5x20	16	M5x12



Flange B14				Flange B5						
F	N	M	T	S	F	Q	N	M	T	S
80	50	65	2	M5	120	--	80	100	3	6.5
90	60	75	2	M5	--	105	95	115	2.5	9
105	70	85	2	M6	--	120	110	130	2.5	9

