



CAUTION

Please use the brake only as a safety brake! The brakes must be mounted by Nanotec.

TECHNICAL DATA

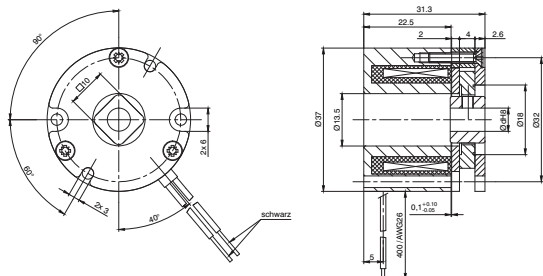
Electrical data	24 VDC/5 W
On/Off switching time	11 ms/17 ms
Hub	Borehole Ø5 H8 with 2 grub screws M3
Fastener	With 3 screws M2.5
Connection	Leads L=400 mm

VERSIONS

Type	Supply Voltage V	Holding Torque Ncm	Shaft Diameter mm	Moment of Inertia kg mm ²	Size mm	Weight kg
BRAKE-BL-0.24-5.0	24	24	5	1	37	0.1

DIMENSIONS (IN MM)

BL-0.24-5.0



CAUTION

Please use the brake only as a safety brake! The brakes must be mounted by Nanotec.

TECHNICAL DATA

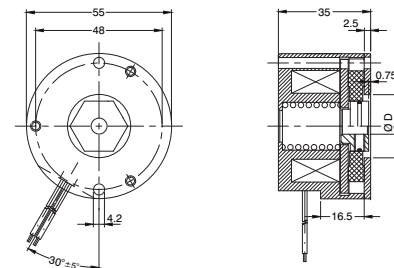
Electrical Data	24 VDC/10 W
On/Off switching time	35 ms/25 ms
Hub	Borehole Ø6.35 H7 with 2x setscrews M4x4 DIN916
Fastener	With 2 stud screws M3 or M4
Connection	Leads L = 400 mm

VERSIONS

Type	Supply Voltage V	Holding Torque Ncm	Shaft Diameter mm	Moment of Inertia kg mm ²	Size mm	Weight kg
BRAKE-BW-1.4-KAGF	24	140	6.35	10	55	0.5

DIMENSIONS (IN MM)

BW-1.4





CAUTION



Please use the brake only as a safety brake! The brakes must be mounted by Nanotec.

TECHNICAL DATA

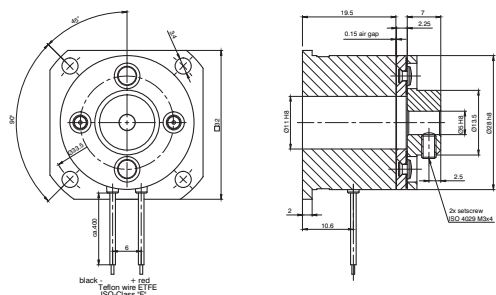
	BRAKE-BKE-0,4-5,0	BRAKE-BKE-1,0-6,35	BRAKE-BKE-2,0-6,35
Electrical data	24 VDC/8 W	24 VDC/10 W	24 VDC/11 W
On/Off switching time	10 ms/6 ms	12 ms/6 ms	25 ms / 6 ms
Hub	Borehole Ø5 H8 with 2 grub screws AM3x4	Borehole Ø6.35 H8 with 2 grub screws AM3x4	Borehole Ø6.35 H8 with 2 grub screws AM4x6
Fastener	With 4 M3 screws	With 4 M3 screws	With 4 M3 screws
Connection	Leads L=400 mm	Leads L=400 mm	Leads L=400 mm

VERSIONS

Type	Supply Voltage V	Holding Torque Ncm	Shaft Diameter mm	Moment of Inertia kg mm ²	Size mm	Weight kg
Brake-BKE-0,4-5,0	24	40	5	1.3	32	0.08
Brake-BKE-1,0-6,35	24	100	6.35	2.1	34	0.11
Brake-BKE-2,0-6,35	24	200	6.35	6.7	42	0.185

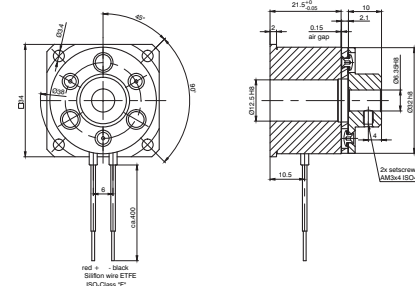
DIMENSIONS (IN MM)

BKE-0,4-5,0

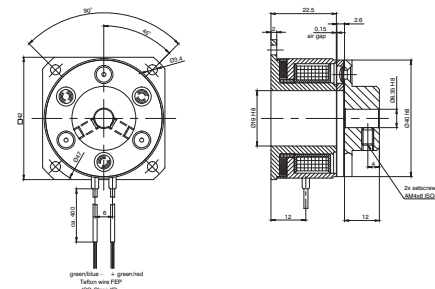


DIMENSIONS (IN MM)

BKE-1,0-6,35



BKE-2,0-6,35



Distributeur Nederland:

Motion Control Systems b.v.
Specialist in Motion control.
Touwslagerij 19 4762AT Zevenbergen
Tel: 0168 325077 - Fax 0168 328134
info@motion.nl - www.motion.nl

Product advies en technische info: service@motion.nl
Bestellingen doorsturen naar : sales@motion.nl

EUROPE:

Nanotec Electronic GmbH & Co. KG
Kapellenstraße 6
85622 Feldkirchen/Munich, Germany

Phone: +49 (0) 89 900 686-0
Fax: +49 (0) 89 900 686-50
E-mail: info@nanotec.de

NORTH AMERICA:

Nanotec Electronic, U.S., Inc.
98 Sheridan Avenue
Medford, MA 02155 USA

Phone: +1 781 219 33 43
Fax: +1 781 498 13 44
E-mail: info@us.nanotec.com

ASIA:

Nanotec Electronics (ChangZhou) Co., Ltd.
Building 1,18 QingJiang Road, New District
ChangZhou City, JiangSu Province
P.R. China 213022

Phone: +86 519 830 211 77
Fax: +86 519 830 211 17
E-mail: info@cn.nanotec.com