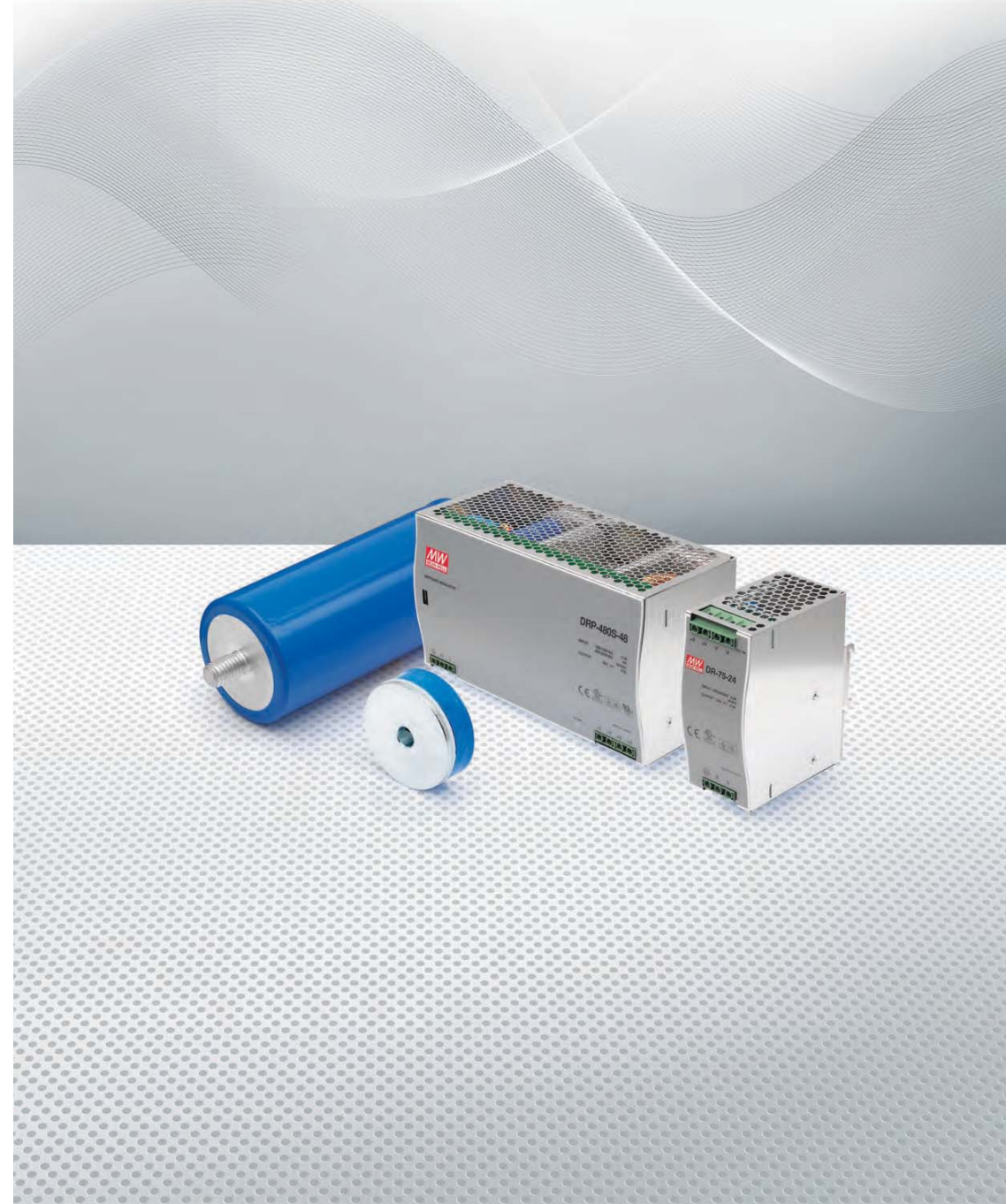


A series of horizontal dotted lines for taking notes, spanning the width of the page.



# Threaded Screw

for Linear Actuators

# Notes



### ORDER IDENTIFIER

**ZST6-1-**  
200-1 = Screw length 200 mm  
with standard finishing

### TECHNICAL DATA

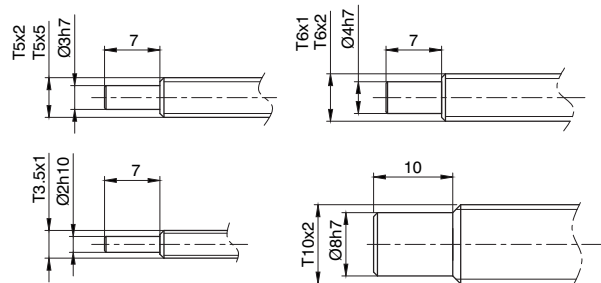
<b>Screw material</b>	Material no: 1.4021 = stainless (not resistant to acid and salt water), all lead screws except T6x2 (1.4404)
<b>Tensile strength</b>	760 N/mm <sup>2</sup>
<b>Thread pitch delay mm/on section</b>	± 0.1/300 mm

### VERSIONS

Type	Pitch mm	Ø Exterior mm	Ø Core mm	Corresponding Motors	Max. Axial Play mm	Available Screw Lengths mm
ZST3.5-1	1	3.5	2.3	L...T3.5x1	±0.06	200,500
ZST6-1	1	6	4.7	L...T6x1	±0.05	200, 300, 1050
ZST6-2	2	6	4.7	L...T6x2	±0.05	200, 300, 1500
ZST5-5	5	5.4	3.6	L...T5x5	±0.1	200, 300, 1050
ZST10-2	2	9.7	8.2	L...T10x2	±0.07	200, 300, 1050
ZSM6-1	1	6	5	L...M6x1	±0.08	200, 300, 1000

### DIMENSIONS (IN MM)

ZST



# Threaded Nut

for Linear Actuators



ORDER IDENTIFIER



LSNUT\_T3.5x1

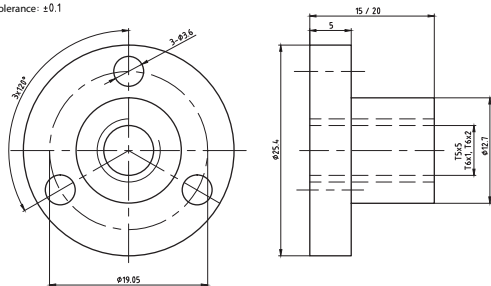
## VERSIONS

Type	Corresponding Motors
LSNUT_T3.5x1	L...-T3.5x1
LSNUT-T5x5-F	L...-T5x5
LSNUT-T6x1-F	L...-T6x1
LSNUT-T6x2-F	L...-T6x2
LSNUT-T10x2-F	L...-T10x2

## DIMENSIONS (IN MM)

LSNUT

tolerance: ±0.1



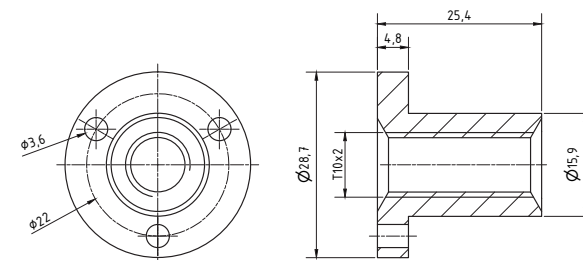
# Threaded Nut

for Linear Actuators

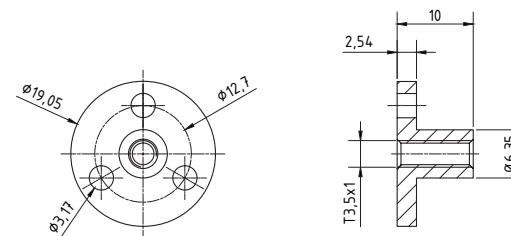


## DIMENSIONS (IN MM)

LSNUT-T10x2



LSNUT-T3.5x1





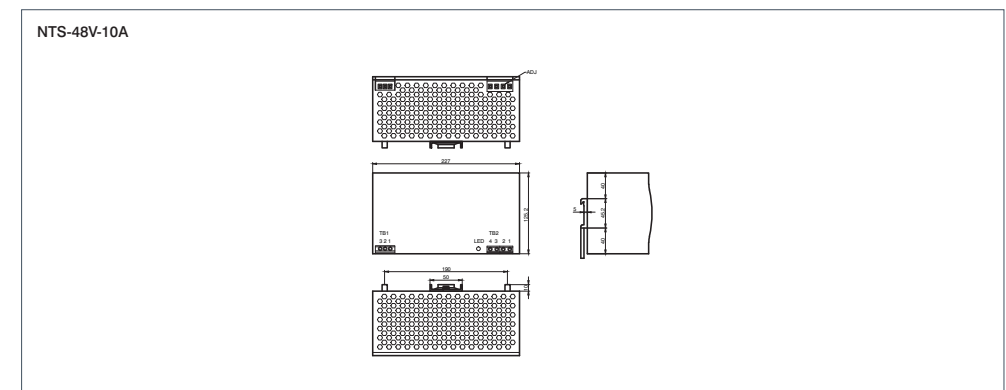
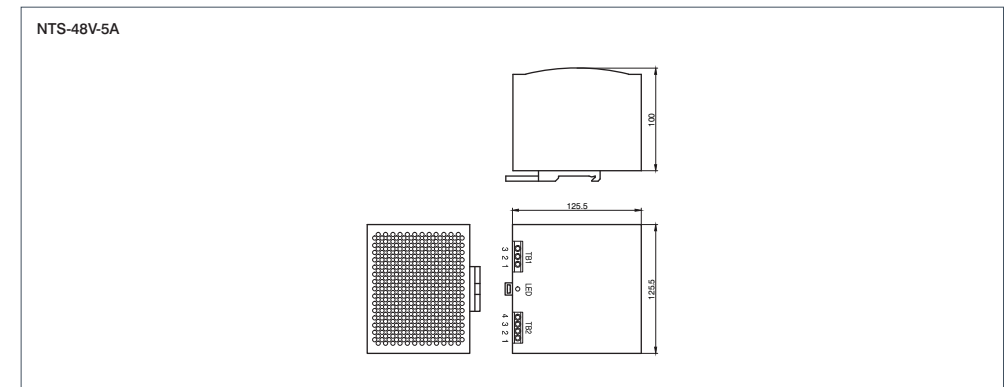
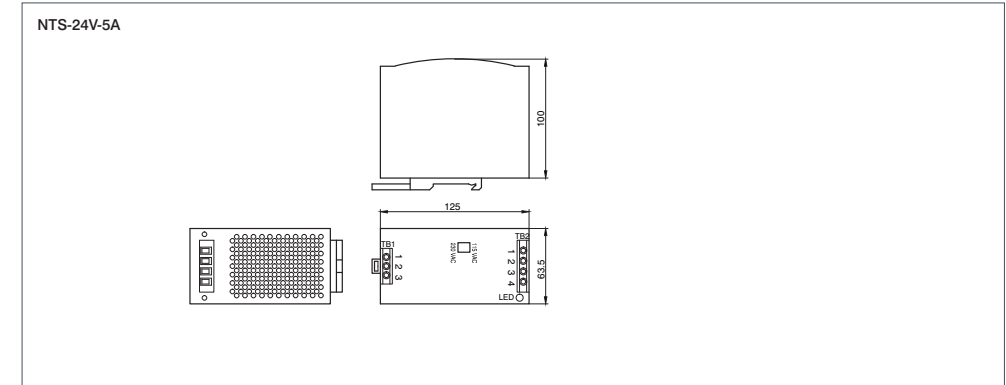
### TECHNICAL DATA

<b>Input voltage</b>	180 VAC to 264 VAC
<b>Output voltage</b>	24 V, 48 V
<b>Safety</b>	Soft start
<b>Protective circuit</b>	Overload/overvoltage protection, over-bridging loss of power 20 ms below full load, short-circuit proof
<b>Temperature range</b>	- 10 °C to +50 °C (up to +70 °C at 60 % load)
<b>Approvals</b>	CE/UL/TÜV
<b>Efficiency</b>	86 %
<b>Type of connection</b>	Screw clamps
<b>Fastening type</b>	DIN carrying rail

### VERSIONS

Type	Input Voltage V	Output Voltage V	Output current A	Power Output W	Weight kg
NTS-12V-3.5A	85...264VAC 120...370VDC	12	3.5	42	0.31
NTS-24V-2A	85...264VAC 120...370VDC	24	2	48	0.31
NTS-24V-3.2A	85...264VAC 120...370VDC	24	3.2	76.8	0.6
NTS-24V-5A	88...132/176...264VAC 248...370VDC	24	5	120	0.79
NTS-24V-10A	85...264VAC 120...370VDC	24	10	240	1.2
NTS-24V-20A	180...264	24	20	480	2.4
NTS-24V-40A	340...550VAC 3ph.	24	40	960	3.3
NTS-48V-2.5A	88...132/176...264VAC 248...370VDC	48	2.5	120	0.79
NTS-48V-5A	85...264VAC 120...370VDC	48	5	240	1.2
NTS-48V-10A	180...264 VAC 250...370 VAC	48	10	480	2.4
NTS-48V-20A	340...550VAC 3ph.	48	20	960	3.3

### DIMENSIONS (IN MM)





## VERSIONS

Type	Suitable for	Cable Length
ZK-GHR3-500-S	CL3-E	0.5
ZK-GHR10-500-S-GHR	CL3-E	0.5
ZK-GHR12-500-S	CL3-E	0.5
ZK-GHR13-500-S-GHR	CL3-E	0.5
ZK-JST-EHR-6-0.5M-S	SC4118 Series	0.5
ZK-JST-EHR-6-2M-S	SC4118 Series	2
ZK-JST-PHR-6-0.3M	DF45	3
ZK-JSTVHR-5N-0.3M	DF45	3
ZK-JSTVHR-6N-0.5M-S	SC6018 Series	0.5
ZK-JSTVHR-6N-2M-S	SC6018 Series	2
ZK-MICROUSB	PD4-C	1.5
ZK-PD4N	PD4-N	0.5
ZK-PD2N	PD2-N4118L1804-3	-
ZK-PD2N-3	PD2-N4118L1804-3	-
ZK-PD4-C-CAN-4-500-S	PD4-C-CAN	0.5
ZK-SMC11	Cable Set for SMC11	0.3
ZK-SMC12	SMC12/PD2-O	-
ZK-SMC12-3	Cable Set for SMC12 with CANopen	0.15
ZK-SMC12-IO	SMC12/PD2-O (I/O and Power Only, Without D-SUB)	0.3
ZK-USB	Cable Set for SMC133-1	1.5
ZK-XHP-4-300	SMC12	0.3
ZK-XHP2-500-S	CL3-E	0.5
ZK-ZHR5-90	SMC135/SMC136 (ENC + HALL Connection Cable)	0.09
ZK-ZHR6-500	SMC135/SMC136 (IO Cable)	0.5



## VERSIONS

Type	Description	Cable Length	IP Protection	Cable Type
ZK-NME1-13-500-S	Cable for NME1 Encoder	0.5	Shielded	Free Cable Ends
ZK-NOE-10-500-S-PADP	Cable for NOE1/NOE2	0.5	Shielded	Adaptercable
ZK-NOE1-10-2000-S	Cable for NOE1/NOE2	2	Shielded	Free Cable Ends
ZK-NOE1-10-500-S	Cable for NOE1/NOE2	0.5	Shielded	Free Cable Ends
ZK-PADP-12-500-S	Cable for Controller	0.5	Shielded	Flying Leads
ZK-SMCI-LD	Encoder with Line Driver for SMC133/47 (5 V)	0.175	Unshielded	Line Driver Converter
ZK-SMCI35-LD	Encoder with Line Driver for SMC135/36	0.175	Unshielded	Line Driver Converter
ZK-WEDL-8-1000-S	Cable for WEDL5541	1	Shielded	Free Cable Ends
ZK-WEDL-8-2000-S	Cable for WEDL5541	2	Shielded	Free Cable Ends
ZK-WEDL-8-500	Flat-band Cable WEDL5541	0.5	Unshielded	Free Cable Ends
ZK-WEDL-8-500-S	Cable for WEDL5541	0.5	Shielded	Free Cable Ends
ZK-WEDS-300-S-SMCI35	Cable for WEDS5541	0.3	Shielded	ZHR5 Connector
ZK-WEDS-5-150-S	Cable for WEDS5541	0.15	Shielded	Free Cable Ends
ZK-WEDS-5-500	Flat-band Cable for WEDS5541	0.5	Unshielded	Free Cable Ends
ZK-WEDS-5-500-S	Cable for WEDS5541	0.5	Shielded	Free Cable Ends



## VERSIONS

Type	Number of Poles	Cable Length	Plug Type	IP Protection
ZK-M8-3-2M-1-PUR-S	3	2	Straight	Shielded
ZK-M8-3-5M-1-PUR-S	3	5	Straight	Shielded



## VERSIONS

Type	Suitable for	Number of Poles	Cable Length	Plug Type
ZK-M12-12-2M-1-PUR-S	ASB42	12	2	Straight
ZK-M12-12-5M-1-PUR-S	ASB42	12	5	Straight
ZK-M12-12-2M-2-PUR-S	ASB42	12	2	Angled
ZK-M12-12-5M-2-PUR-S	ASB42	12	5	Angled
ZK-M12-17-1M-2-S-FIN	PD2-N4118-IP	17	1.5	Angled
ZK-M12-8-2M-1-PUR-S	AS Motors with Encoder	8	2	Straight
ZK-M12-8-5M-1-PUR-S	AS Motors with Encoder	8	5	Straight
ZK-M12-8-2M-2-PUR-S	AS Motors with Encoder	8	2	Angled
ZK-M12-8-2M-2-PADP	ASB Motors to Controller	8	5	Angled
ZK-M12-8-5M-2-PUR-S	AS Motors with Encoder	8	5	Angled
ZK-M12-5-2M-1-PUR-S	AS Motors, PD2 IP and PD4 IP	5	2	Straight
ZK-M12-5-5M-1-PUR-S	AS Motors, PD2 IP and PD4 IP	5	5	Straight
ZK-M12-5-2M-2-PUR-S	AS Motors, PD2 IP and PD4 IP	5	2	Angled
ZK-M12-5-5M-2-PUR-S	AS Motors, PD2 IP and PD4 IP	5	5	Angled
ZK-M12-12-2M-2-PADP	AS Motors to Controller	12	2	Angled
ZK-M12-17-1M-2-PUR-S	PD2-IP and PD4-IP	17	1.5	Angled
ZK-M12-17-3M-2-PUR-S	PD2-IP and PD4-IP	17	3	Angled



## VERSIONS

Type	Suitable for	Number of Poles	Cable Length	Cable Type
ZK-TW-3-2M	PD6-N8918...S	3	2	Motor Cable
ZK-TW-3-5M	PD6-N8918...S	3	5	Motor Cable
ZK-TW-3-10M	PD6-N8918...S	3	10	Motor Cable
ZK-TW-3-2M-2	PD6-N8918...S	3	2	Motor Cable
ZK-TW-3-5M-2	PD6-N8918...S	3	5	Motor Cable
ZK-TW-3-10M-2	PD6-N8918...S	3	10	Motor Cable
ZK-TW-7-2M	AS8918	7	2	Motor Cable
ZK-TW-18-2M	PD6-N8918...S	18	2	Signal Cable
ZK-TW-18-5M	PD6-N8918...S	18	5	Signal Cable
ZK-TW-18-10M	PD6-N8918...S	18	10	Signal Cable
ZK-TW-18-2M-2	PD6-N8918...S	18	2	Signal Cable
ZK-TW-18-5M-2	PD6-N8918...S	18	5	Signal Cable
ZK-TW-18-10M-2	PD6-N8918...S	18	10	Signal Cable
ZK-TW-4-2M	ASB42	7	2	Motor Cable



## VERSIONS

Type	Number of Poles	Cable Length	Cable Type
ZK-JSTVL-4	4	2	for JST XHP4 Connector
ZK-JSTVL-6	6	2	for JST XHP6 Connector





DESCRIPTION

The **Nano brake module** (PWM controller) not only reduces power and heat loss by 35%, but also extends motor life and activation times.

With the additional **ZIB-PD6-N** board, wiring Plug & Drive PD6-N motors is no longer a time-consuming task. Test board **ZIB2** can be used to quickly and easily commission Nanotec motor controllers and Plug & Drives. Additional LEDs and buttons serve to test and monitor the functions of the digital inputs and outputs. As well, signals can be conducted directly to external sensors and actuators via the connecting terminal. The board is not intended for permanent installation in machines.

VERSIONS

Type	Type	Max. Operating Voltage V	Dimensions
EB-Brake	PWM Controller for Brakes	24	25.4 x 12.5 mm
ZIB-PDx-N	Add-on Board for PD6-N Motors	24 - 48	45 x 110 mm
ZIB2-PDx-N	Interface Board Plug&Drive and SMC Controller	24 - 48	100 x 130 mm



VERSIONS

Type	Description
ZCJST-XHP	Connector socket housing
ZCJST-SXH	Contacts for connector socket housing
ZCJST-XHP	Insulation displacement connection technology, connector for AWG24
ZC2	Pin connector for print installation RM 2.54 mm
ZCPHOFK-MC0.5	COMBICON connector socket housing
ZCPHOFKC-2.5HC	COMBICON HC connector socket housing

ORDER IDENTIFIER



- ZCJST-XHP-**  
 2 = 2 Pin configuration  
 3 = 3 Pin configuration  
 4 = 4 Pin configuration  
 5 = 5 Pin configuration  
 6 = 6 Pin configuration  
 8 = 8 Pin configuration

CAUTION



For mounting the connector, please use a crimping tool, e.g. JST WC-110.



# Charging Capacitor

for SMC and PDX-I



## VERSIONS

Type	Capacity µF	Max. Operating Voltage V	Temperature Range °C	Capacitance Tolerance	Grid Dimensions mm	Dimensions
Z-K4700/50	4700	50	-40 to +85	± 20%	10	Cylindrical aluminum cup, Ø 25 mm, 35 mm length
Z-K10000/100	10000	100	-40 to +105	-10% ~ 30%	20	Cylindrical aluminum cup, Ø 40 mm, 95 mm length

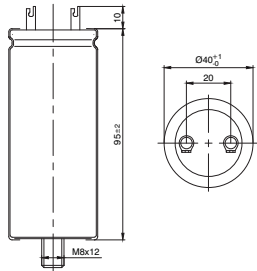
## ORDER IDENTIFIER



Z-K4700/50

## DIMENSIONS (IN MM)

Z-K10000-100



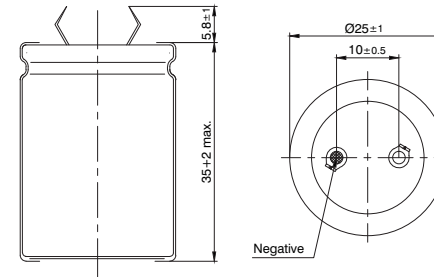
# Charging Capacitor

for SMC and PDX-I



## DIMENSIONS (IN MM)

Z-K4700-50





ORDER IDENTIFIER



ZD-D28

## DESCRIPTION

The dampers D40, D56 and D56m from Nanotec can be installed on all stepper motors with a double shaft (size 40 – 58mm). Alongside the improved settling time, system resonances are suppressed, and vibrations and motor noises at lower speeds are greatly reduced.

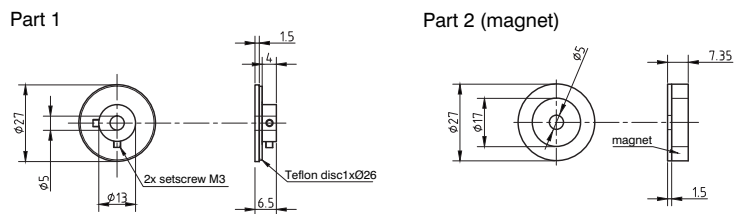
In case of device-specific resonance and noise problems, device setup is made considerably easier by mounting a damper.

## VERSIONS

Type	Corresponding Motors	Shaft Diameter mm	Weight kg
ZD-D28	ST28, ST35	5	0.026
ZD-D40	ST41, ST42	5	0.04
ZD-D56	ST59	6.35	0.1

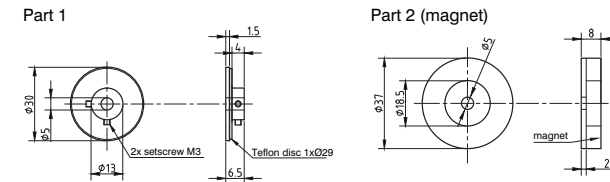
## DIMENSIONS (IN MM)

ZD-D28

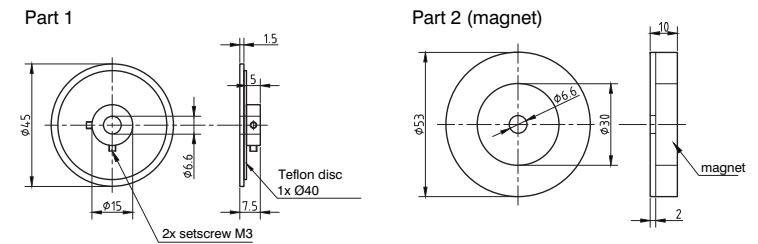


## DIMENSIONS (IN MM)

ZD-D40



ZD-D56





ORDER IDENTIFIER



ZD-DF40

DESCRIPTION

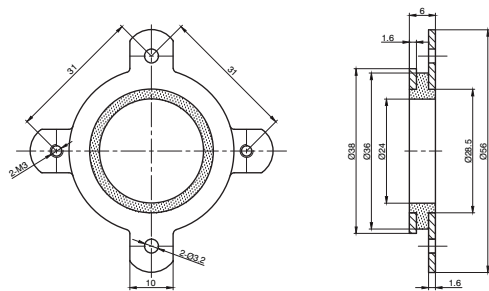
The vulcanized rubber between the two flange rings in ZD... dampers serves first and foremost to suppress rigid-body sound. Depending on the frequency, sound can be reduced by 3–10 dB(A). The ZD... damper cost-effectively attenuates noise due to the different sound speeds of steel/air/rubber (5000/331/50 m/s) and its damping oscillation tendency.

VERSIONS

Type	Corresponding Motors
ZD-DF40	ST41, ST42
ZD-DF56	ST59

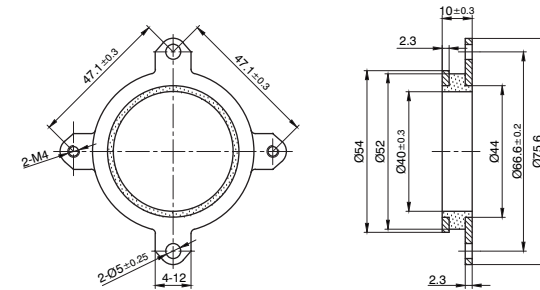
DIMENSIONS (IN MM)

ZD-DF40



DIMENSIONS (IN MM)

ZD-DF56



# Shaft Coupling

for Stepper and BLDC Motors



## TECHNICAL DATA

Temperature range	-20 to +60 °C
Materials	Hub of aluminum alloy 2011T3 and 2011T8 BS4300/5FC1
Transmission disc	Nylon 11 (colorless)
Tapped blind hole	Length of the parallel borehole $\pm 0.2$ . Boreholes end with 118 ° bevel
Operating factors	See data sheet

## ORDER IDENTIFIER



**ZW-235-19-20**  
(with a min. order of 50 pcs, custom specific boreholes are possible!)

## CAUTION



The couplings from Nanotec are also available without hub hole for installation by the customer. Always order two couplings and one transmission disc.

## VERSIONS

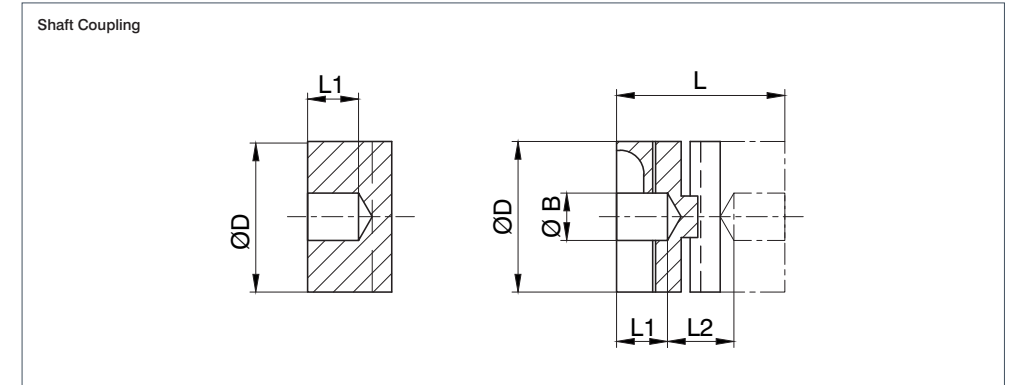
Type	Description
ZW-234-19-20	Shaft Coupling
ZW-234-19-0	Transmission Disc
ZW-234-25-24	Shaft Coupling
ZW-234-25-0	Transmission Disc
ZW-234-41-38	Shaft Coupling
ZW-234-41-0	Transmission Disc

# Shaft Coupling

for Stepper and BLDC Motors



## DIMENSIONS (IN MM)



Distributeur Nederland :

Motion Control Systems b.v.  
Specialist in Motion control.  
Touwslagerij 19 4762AT Zevenbergen  
Tel: 0168 325077 - Fax 0168 328134  
info@motion.nl - www.motion.nl

Product advies en technische info: [service@motion.nl](mailto:service@motion.nl)  
Bestellingen doorsturen naar : [sales@motion.nl](mailto:sales@motion.nl)

**EUROPE:**

Nanotec Electronic GmbH & Co. KG  
Kapellenstraße 6  
85622 Feldkirchen/Munich, Germany

Phone: +49 (0) 89 900 686-0  
Fax: +49 (0) 89 900 686-50  
E-mail: [info@nanotec.de](mailto:info@nanotec.de)

**NORTH AMERICA:**

Nanotec Electronic, U.S., Inc.  
98 Sheridan Avenue  
Medford, MA 02155 USA

Phone: +1 781 219 33 43  
Fax: +1 781 498 13 44  
E-mail: [info@us.nanotec.com](mailto:info@us.nanotec.com)

**ASIA:**

Nanotec Electronics (ChangZhou) Co., Ltd.  
Building 1, 18 Qinguiang Road, New District  
ChangZhou City, JiangSu Province  
P.R. China 213022

Phone: +86 519 830 211 77  
Fax: +86 519 830 211 17  
E-mail: [info@cn.nanotec.com](mailto:info@cn.nanotec.com)