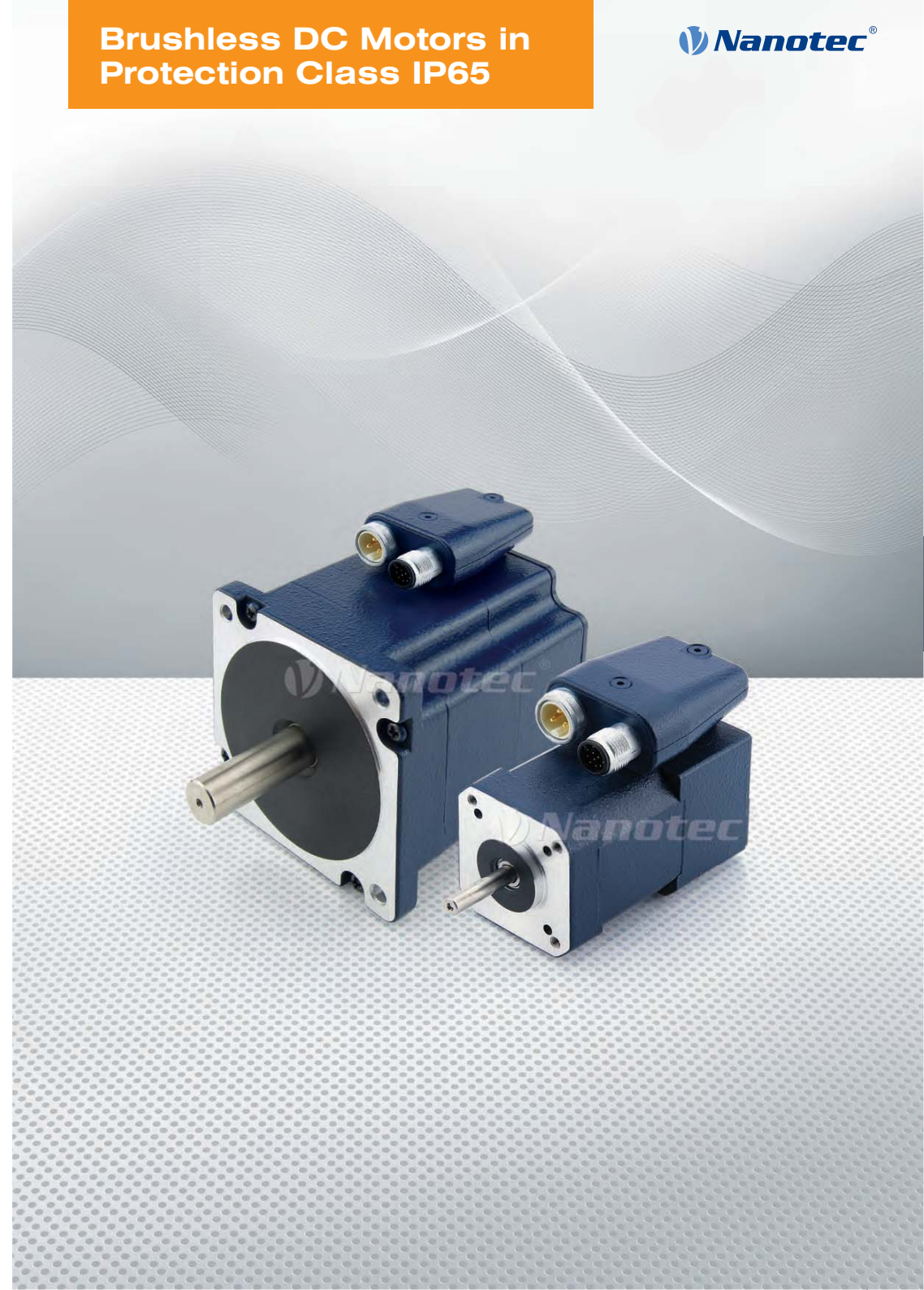


Lined area for notes with horizontal dotted lines.





OPTION



DESCRIPTION

Due to its high-energy permanent magnets, the 3-phase BLDC motor ASB42 is ideally suited for applications where smooth running and a long service life are required. The housing of this motor with protection class IP 65 (except for shaft outlet) is sealed against humidity and dust. The ASB42 features M16 and M12 connectors for power and the rotary encoder.

Different motor versions offer torques ranging from 0.5 to 0.25 Nm and speeds ranging from 4000 to 14,000 rpm. The entire range of ASB BLDC motors include magnetic encoders which ensure precise positioning, even in challenging industrial environments.

VERSIONS

Type	Nominal Output W	Nominal Torque Ncm	Nominal Current A	Nominal Voltage V	Nominal Speed rpm	Torque Constant Ncm/A	Rotor Inertia gcm ²	Weight kg	Length „A“ mm
ASB42C048060-ENM	160	25	4.63	48	6000	5.4	96	0.75	121

ORDER IDENTIFIER

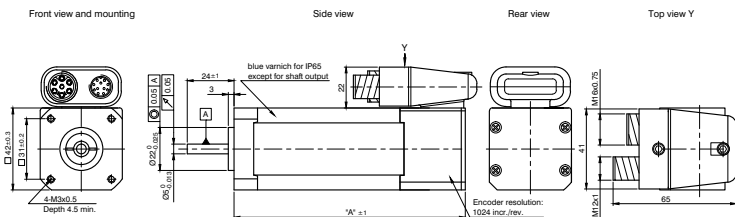
ASB42C048060-ENM

ACCESSORIES

- ZK-M12-12-2M-1-PUR-S M12 Cable
- ZK-M12-12-2M-2-PUR-S M12 Cable
- ZK-M12-12-5M-1-PUR-S M12 Cable
- ZK-M12-12-5M-2-PUR-S M12 Cable
- ZK-TW-4-2M M16 (TW) Cable

DIMENSIONS (IN MM)

ASB42C048060-ENM



OPTION



DESCRIPTION

The brushless DC motor ASB87 was developed especially for rugged environments. The housing of this motor with protection class IP 65 (except for shaft outlet) is sealed against humidity and dust. Complete IP rating is available for OEM customers upon request.

The ASB87 features a built-in 1024 CPR magnetic encoder and doesn't require additional hall sensors. The reference signal is synchronous to the hall phase for even more exact positioning.

VERSIONS

Type	Nominal Output W	Nominal Torque Ncm	Nominal Current A	Nominal Voltage V	Nominal Speed rpm	Torque Constant Ncm/A	Rotor Inertia gcm ²	Weight kg	Length „A“ mm
ASB87S048030-ENM	250	70	6.25	48	3000	11.2	800	1.85	91.9

ORDER IDENTIFIER

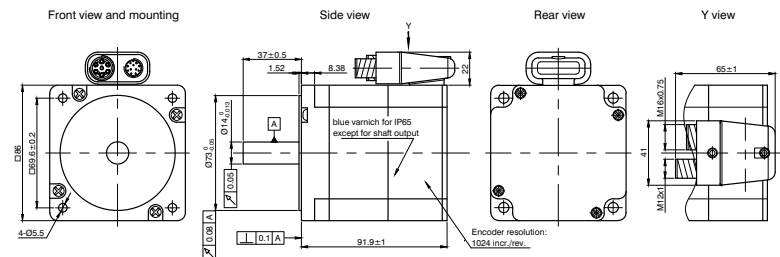
ASB87S048030-ENM

ACCESSORIES

- ZK-TW-7-2M M16 (TW) Cable

DIMENSIONS (IN MM)

ASB87S048030-ENM



Distributeur Nederland:

Motion Control Systems b.v.
Specialist in Motion control.
Touwslagerij 19 4762AT Zevenbergen
Tel: 0168 325077 - Fax 0168 328134
info@motion.nl - www.motion.nl

Product advies en technische info: service@motion.nl
Bestellingen doorsturen naar : sales@motion.nl

EUROPE:

Nanotec Electronic GmbH & Co. KG
Kapellenstraße 6
85622 Feldkirchen/Munich, Germany

Phone: +49 (0) 89 900 686-0
Fax: +49 (0) 89 900 686-50
E-mail: info@nanotec.de

NORTH AMERICA:

Nanotec Electronic, U.S., Inc.
98 Sheridan Avenue
Medford, MA 02155 USA

Phone: +1 781 219 33 43
Fax: +1 781 498 13 44
E-mail: info@us.nanotec.com

ASIA:

Nanotec Electronics (ChangZhou) Co., Ltd.
Building 1,18 QingJiang Road, New District
ChangZhou City, JiangSu Province
P.R. China 213022

Phone: +86 519 830 211 77
Fax: +86 519 830 211 17
E-mail: info@cn.nanotec.com